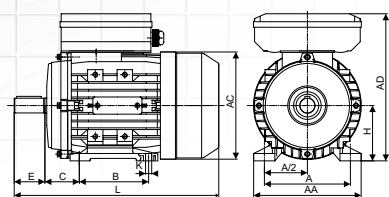
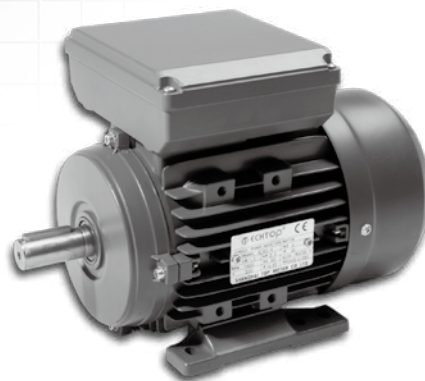


ML Series

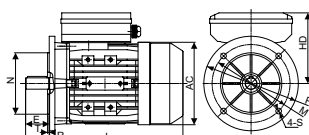
Single-Phase Capacitor Start and Capacitor Run Asynchronous Motors

Aluminum Housing

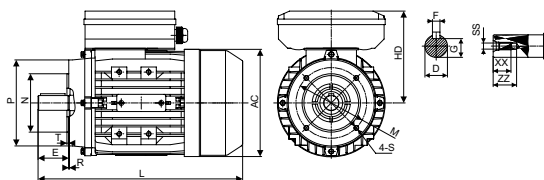
ML series aluminum housing single-phase dual-capacitor asynchronous motors, with latest design in entirety, are made of selected quality materials and conform to the IEC standard. ML motors have good performance, safety and reliable operation, the multiple of starting torque is up to 2.5. These series motors are suitable for the occasion where the requirements of big starting torque and high over load, such as air compressors, pumps, and many other small machines.



IM B3



IM B5



IM B14

Overall & Installation Dimensions

FRAME	Mounting Dimensions									Overall Dimensions					Shaft End Screw Dimensions		
	H	A	B	C	D	E	F	G	K	AA	AD	HD	AC	L	SS	XX	ZZ
ML 63	63	100	80	40	Φ11	23	4	8.5	7 × 10	120	179	116	Φ121	217	M4	10	14
ML 71	71	112	90	45	Φ14	30	5	11	7 × 10	132	194	123	Φ139	255	M5	12	17
ML 80	80	125	100	50	Φ19	40	6	15.5	10 × 13	160	223	143	Φ156	290	M6	16	21
ML 90S	90	140	100	56	Φ24	50	8	20	10 × 13	175	240	150	Φ174	335	M8	19	25
ML 90L	90	140	125	56	Φ24	50	8	20	10 × 13	175	240	150	Φ174	365	M8	19	25
ML 100L	100	160	140	63	Φ28	60	8	24	12 × 15	198	271	171	Φ196	403(421)	M10	22	30
ML 112M	112	190	140	70	Φ28	60	8	24	12 × 15	220	297	185	Φ221	431	M10	22	30

FRAME	KK	B5						B14						B5R						B14B						
		N	M	P	S	T	R	N	M	P	S	T	R	N	M	P	T	S	R	N	M	P	T	S	R	
ML 63	1-M20*1.5	Φ95	Φ115	Φ140	Φ10	3	0	Φ60	Φ75	Φ90	M5	2.5	0													
ML 71	1-M20*1.5	Φ110	Φ130	Φ160	Φ10	3.5	0	Φ70	Φ85	Φ105	M6	2.5	0	Φ95	Φ115	Φ140	3	Φ10	0	Φ95	Φ115	Φ140	3	M8	0	
ML 80	1-M20*1.5	Φ130	Φ165	Φ200	Φ12	3.5	0	Φ80	Φ100	Φ120	M6	3	0	Φ110	Φ130	Φ160	3.5	Φ10	0	Φ110	Φ130	Φ160	3.5	M8	0	
ML 90	1-M20*1.5	Φ130	Φ165	Φ200	Φ12	3.5	0	Φ95	Φ115	Φ140	M8	3	0	Φ110	Φ130	Φ160	3.5	Φ10	0	Φ110	Φ130	Φ160	3.5	M8	0	
ML 100	1-M20*1.5	Φ180	Φ215	Φ250	Φ15	4	0	Φ110	Φ130	Φ160	M8	3.5	0	Φ130	Φ165	Φ200	3.5	Φ12	0	Φ130	Φ165	Φ200	3.5	M10	0	
ML 112	1-M25*1.5	Φ180	Φ215	Φ250	Φ15	4	0	Φ110	Φ130	Φ160	M8	3.5	0	Φ130	Φ165	Φ200	3.5	Φ12	0	Φ130	Φ165	Φ200	3.5	M10	0	

T echnical Data (at 230V/50Hz)

MODEL	Power (kW)	Current (A)	Speed (r/min)	Eff (%)	Power factor (cos φ)	T _{st} /T _n (Times)	T _{max} /T _n (Times)	Starting Current(A)	Run Capacitor (μf/V)	Start Capacitor (μf/V)	Noise dB(A)	W.T (kg)	Inertia kg*m ²
ML631-2	0.18	1.36	2820	62	0.93	1.9	1.8	7	8μf/450V	30μf/250V	70	3.9	0.000141
ML632-2	0.25	1.71	2800	67.5	0.94	2.3	1.8	8	10μf/450V	30μf/250V	70	4.4	0.000168
ML711-2	0.37	2.40	2780	70.5	0.95	2.5	1.6	12	12μf/450V	40μf/250V	75	6.2	0.000330
ML712-2	0.55	3.31	2790	74.5	0.97	2.5	1.8	20	16μf/450V	50μf/250V	75	7	0.000437
ML801-2	0.75	4.25	2840	77.5	0.99	2.5	1.8	30	20μf/450V	75μf/250V	75	9	0.000781
ML802-2	1.1	6.08	2850	79.5	0.99	2.3	1.8	40	30μf/450V	120μf/250V	78	10.3	0.000938
ML90S-2	1.5	8.23	2860	80	0.99	2.5	1.8	56	40μf/450V	200μf/300V	80	13.8	0.001512
ML90M-2	1.8	9.76	2860	81	0.99	2.5	1.8	65	40μf/450V	200μf/300V	80	15.1	0.001752
ML90L-2	2.2	11.9	2850	81	0.99	2.5	1.75	15	50μf/450V	250μf/300V	80	16.8	0.001995
ML100L-2	3	17.7	2830	75	0.98	2.5	1.63	110	60μf/450V	300μf/300V	83	25	0.004803
ML112M1-2	3.7	19.9	2900	82.5	0.98	2.5	1.8	155	60μf/450V	400μf/300V	84	31	0.007170
ML112M2-2	4	21.3	2900	83.5	0.98	2.5	1.8	165	60μf/450V	400μf/300V	84	33	0.007453
ML631-4	0.12	1.01	1380	54.5	0.95	2.5	1.65	6	8μf/450V	30μf/250V	65	4.1	0.000291
ML632-4	0.18	1.36	1340	60	0.96	2.3	1.43	6	10μf/450V	30μf/250V	65	4.5	0.000340
ML711-4	0.25	1.78	1415	63	0.97	2.5	1.7	10	12μf/450V	40μf/250V	65	5.9	0.000598
ML712-4	0.37	2.53	1410	65.5	0.97	2.3	1.6	15	16μf/450V	50μf/250V	68	6.9	0.000760
ML800-4	0.37	2.52	1420	66.5	0.96	2.5	1.8	15	16μf/450V	50μf/250V	68	8.5	0.001105
ML801-4	0.55	3.52	1420	71.5	0.95	2.5	1.8	20	20μf/450V	75μf/250V	70	9.6	0.001380
ML802-4	0.75	4.56	1420	73	0.98	2.5	1.75	27	25μf/450V	100μf/250V	70	10.9	0.001656
ML90S-4	1.1	6.62	1420	76	0.95	2.5	1.7	40	35μf/450V	150μf/250V	73	13.8	0.002510
ML90L-4	1.5	8.56	1420	78.5	0.97	2.5	1.75	55	40μf/450V	200μf/300V	75	16.7	0.003252
ML100L0-4	1.84	10.3	1440	79.5	0.98	2.3	1.62	60	50μf/450V	200μf/300V	77	21	0.006804
ML100L1-4	2.2	12.1	1440	80.5	0.98	2.5	1.65	80	50μf/450V	250μf/300V	78	22.8	0.008045
ML100L2-4	3	16.4	1445	83	0.96	2.4	1.75	110	60μf/450V	300μf/300V	78	28.7	0.010543
ML112M1-4	3.7	19.7	1430	83.5	0.98	2.4	1.75	130	60μf/450V	400μf/300V	79	31	0.013608
ML112M2-4	4	21.3	1435	83.5	0.98	2.5	1.75	140	60μf/450V	400μf/300V	79	32.8	0.014485
ML711-6	0.18	1.3	930	60	0.97	2.3	1.72	7	10μf/450V	40μf/250V	68	6.7	0.000965
ML801-6	0.37	2.5	935	67	0.97	2.2	1.55	13	16μf/450V	50μf/250V	68	10.1	0.001829
ML802-6	0.55	3.5	935	71	0.97	2.2	1.45	20	20μf/450V	75μf/250V	70	10.8	0.002366
ML90S-6	0.75	4.7	945	71	0.97	2.1	1.45	35	30μf/450V	150μf/250V	70	14.2	0.003534
ML90L-6	1.1	6.7	945	74	0.96	2.5	1.45	45	45μf/450V	200μf/300V	70	17.3	0.004792
ML100L-6	1.5	8.73	960	77	0.97	2.3	1.55	60	45μf/450V	200μf/300V	72	23.8	0.010784
ML112M-6	2.2	12.0	965	82	0.97	2.5	1.7	100	60μf/450V	400μf/300V	75	31.2	0.019523

IEC MOTOR

FIRE PUMP MOTOR

GOST MOTOR

NEMA MOTOR

DC MOTOR

EC MOTOR